

DASHBOARD CLINTON AVE. ELEMENTARY SCHOOL

**INFORMATION**

Clinton Ave. Elementary School

477.6 kWp  
Nominal PV power

10/22/2019  
Date of commissioning

On-Grid  
Operating mode

**STATUS**

- SN: 3002573788 Inv#6
- SN: 3002573797 Inv#3
- SN: 3002573786 Inv#5
- SN: 3003521550 Inv#4
- SN: 3002573800 Inv#1

**PERFORMANCE RATIO**

No data available

**ENERGY AND POWER - PV**

37.63 kW  
0 minutes ago

0 kW 400.00 kW

24.18 kWh  
Today

2,209.94 kWh  
Current month

2,209.94 kWh  
Current year

**WEATHER**

Unfortunately, something went wrong  
An unexpected error occurred. Please try again later.  
[404]

**CO2 AVOIDANCE**

48.5 t  
today

28.74 t  
Total

DASHBOARD HOME

SYSTEM SIZE IN KILOWATTS DC

DATE THE INVERTERS WERE COMMISSIONED WITH SMA

CONNECTION STATUS TO UTILITY GRID

INDIVIDUAL INVERTER SELECTION / OPERATING STATUS

SYSTEM SIZE IN KILOWATTS AC  
(THERE ARE 8 x 50KW INVERTERS)

CURRENT REAL TIME TOTAL SYSTEM PRODUCTION  
MEASURED IN WATTS (W) OR KILOWATTS (KW)

THE USAGE/DEMAND FOR ANY ELECTRICAL  
SERVICE IS DEFINED BY KILOWATT HOURS PER YEAR  
(KWH/YR)

CURRENT WEATHER WITH  
NEXT DAY FORECAST


DAILY, MONTHLY AND YEARLY  
QUICK VIEW OF SYSTEM TOTAL PRODUCTION  
MEASURED IN KILOWATT HOURS (KWH)

THE AVOIDANCE OF CO2 IS A MEASURE FOR THE  
CONTRIBUTION TO CLIMATE PROTECTION AND THUS REDUCES THE  
GREENHOUSE EFFECT. CO2 IS EMITTED DURING THE  
GENERATION OF ELECTRICAL POWER AS A RESULT  
OF BURNING FOSSIL FUELS (E.G. COAL).

DASHBOARD SN: 3002573800 INV#1

**INFORMATION**

Sunny Tripower CORE1-US

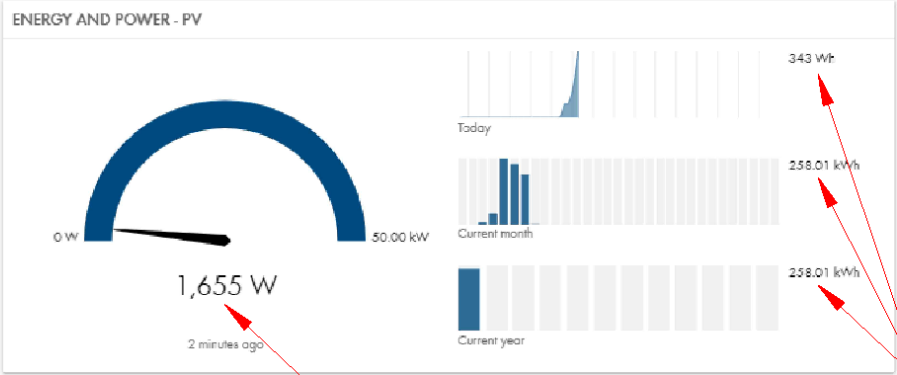


3002573800  
Serial number


50 kWp  
Rated output power

**STATUS**

- ✓ Device state
- ✓ State of inverter comparison



**CO<sub>2</sub> AVOIDANCE**



2.2 lb  
today

3.52 m.l.  
Total

INDIVIDUAL INVERTER SIZE IN KW AC

GOOD OPERATING INVERTER STATUS

CURRENT REAL TIME INDIVIDUAL INVERTER PRODUCTION MEASURED IN WATTS (W)

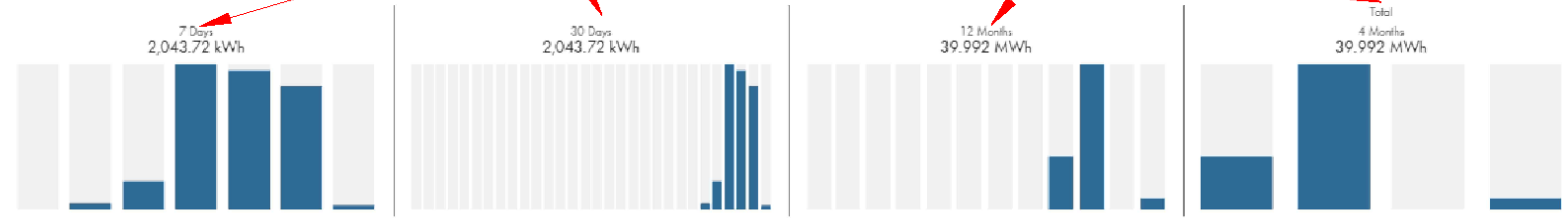
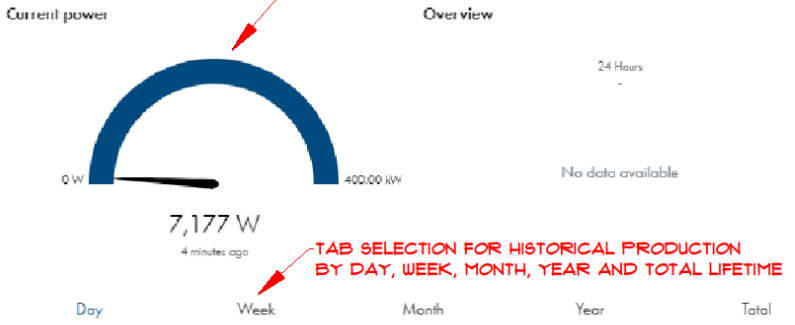
DAILY, MONTHLY AND YEARLY QUICK VIEW OF INDIVIDUAL INVERTER PRODUCTION MEASURED IN KILOWATT HOURS (KWH)

INDIVIDUAL INVERTER CO2 AVOIDANCE

ENERGY AND POWER - PV

CURRENT TOTAL SYSTEM PRODUCTION IN WATTS(W)

QUICK VIEW BAR GRAPHS OF HISTORICAL PRODUCTION



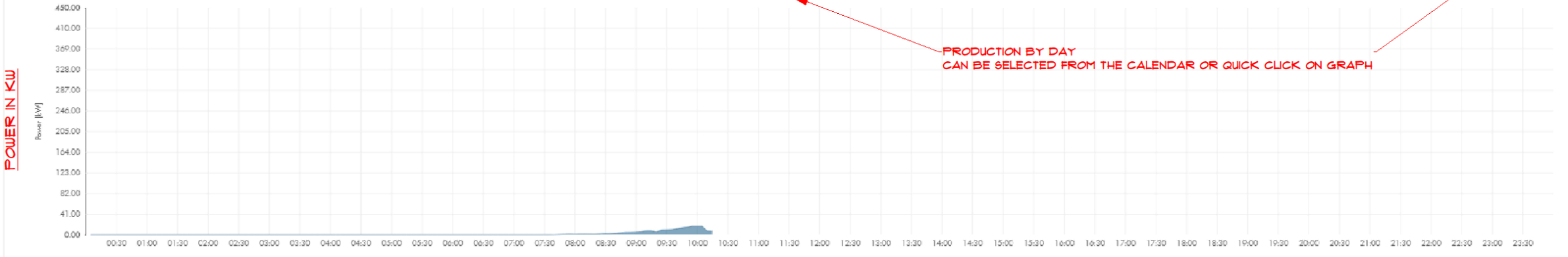
TAB SELECTION FOR HISTORICAL PRODUCTION BY DAY, WEEK, MONTH, YEAR AND TOTAL LIFETIME



ENERGY & POWER - PV (PHOTOVOLTAICS)

< 01/08/2020 >

PRODUCTION BY DAY CAN BE SELECTED FROM THE CALENDAR OR QUICK CLICK ON GRAPH



TIME OF DAY

Details